



ABSOLUTE
PROPERTY

Sopers House, Soper Road, Cuffley EN6 4RY

☎ 020 8882 8156 📠 020 8882 8155

✉ info@absolutepropertyagents.com

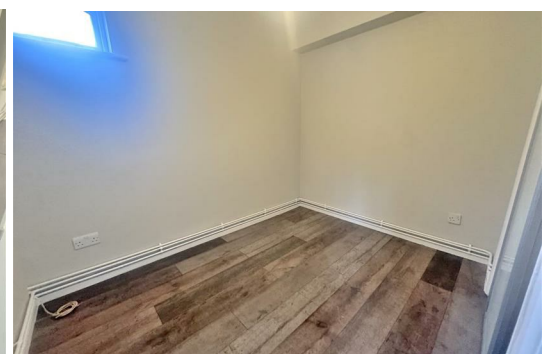
🌐 www.absolutepropertyagents.com



**124 Larmans Road, Enfield
EN3 6QU**

£1,100 PCM

Absolute Property are pleased to offer this ground floor studio flat conveniently situated for the m25 and turkey street rail station. The property benefits from a separate sleeping area, a modern kitchen and bathroom, off street parking, gas central heating and double glazing. Available for immediate occupation, call for further information or to arrange a viewing.



124 Larmans Road, Enfield
EN3 6QU

